



AVK SWING CHECK VALVE, METAL SEATED, PN 10/16

41/39-004

Right side free shaft end, DN350-600

AVK series 41 swing check valves come with both metal and resilient seats. Installed in pumping applications to prevent back flow they can be used for drinking water as well as waste water. The disc is connected to the shaft via a flexible bush that allows disc and valve seat to adjust exactly. All interior parts are stainless steel or coated with drinking water approved epoxy or EPDM. The series 41 valves are available with either closed bushings or protruding shaft end where a lever with a weight or a spring can be fitted to mitigate pressure surges.

Product description:

Metal seated swing check valve with free shaft end. For drinking water and neutral liquids to max. 70°C

Standards:

- Designed according to EN 1074 - 3
- Face to face according to EN 558 Table 2 Basic Series 48
- Standard flange drilling to EN1092-2 (ISO 7005-2), PN 10/16

Test/Approvals:

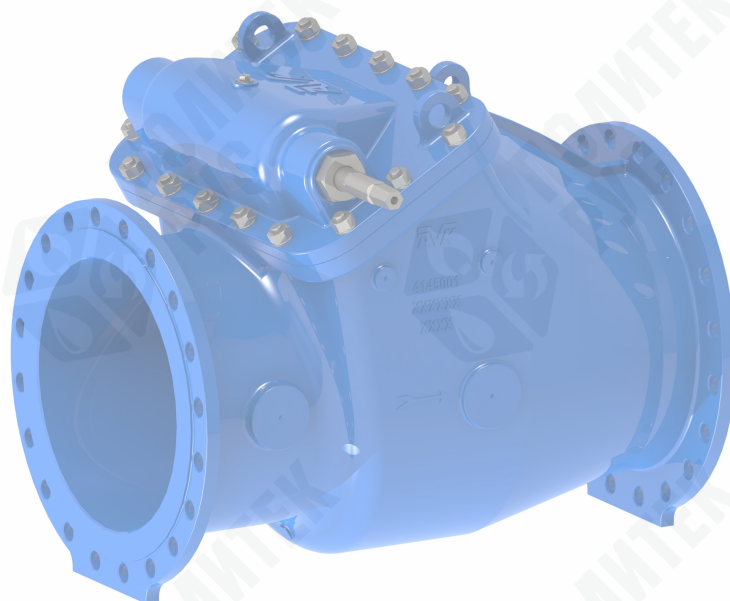
- Hydraulic test according to EN 1074-3/ EN12266
- Seat: 1.1×PN (in bar), Body: 1.5×PN (in bar).

Features:

- Metal seat in high strength alu-bronze
- Shaft fitted in the bonnet allows for easy maintenance without removing valve from pipeline
- Shaft material 1.4021 (AISI 420) stainless steel
- Free protruding shaft end for mounting of lever and weight or spring to assist valve closing and avoid water hammer
- Hinge of ductile iron coated with drinking water approved epoxy, firmly tightened around the shaft to eliminate play
- Bonnet gasket in a groove between bonnet and body to prevent blow-out
- All seals and coatings with contact to the fluid are approved for drinking water - coating is blue, 250µm fusion bonded epoxy
- Disc mounted in a flexible rubber bushing which allows it to tilt slightly in all directions and adjust exactly to the valve seat
- Bosses on each side of the valve seat allow for installation of pressure gauge, by-pass, etc.

Accessories:

Lever and weight/spring, lever protection guard, combi-flanges, proximity switch, flange adaptors.



Expect ... **AVR**

The designs, materials and specifications shown are subject to change without notice due to the continuous development of our product programme.

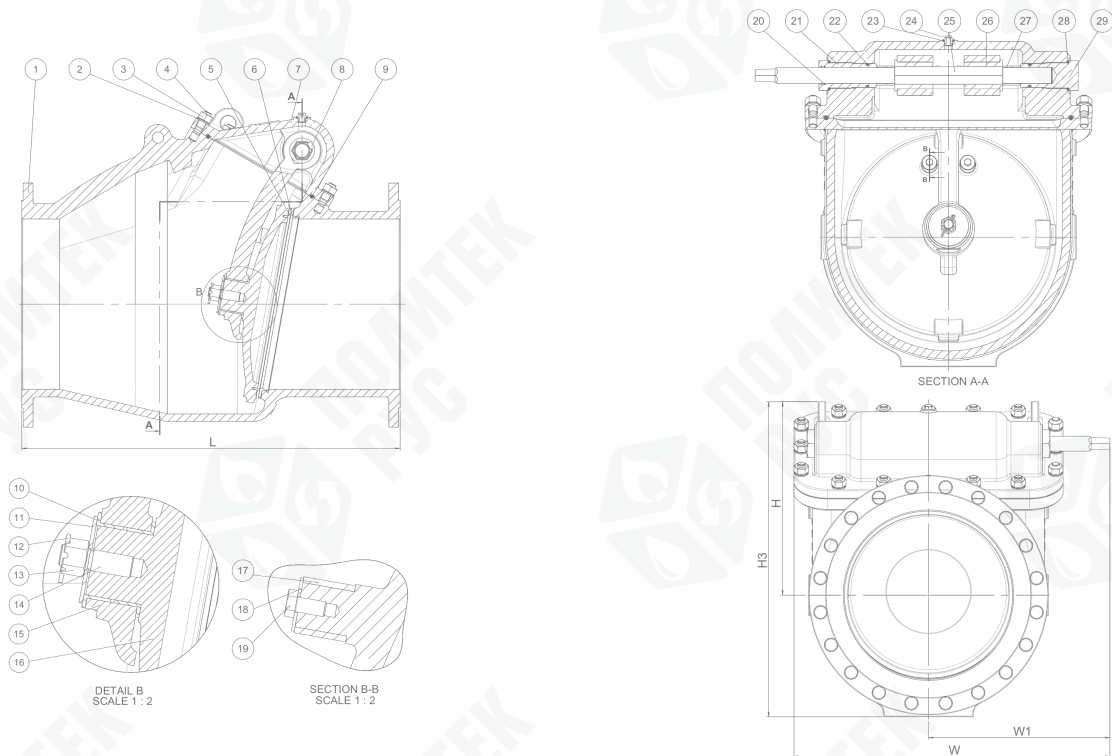
COPYRIGHT©AVK GROUP 2017

atao - 23-Mar-2017 15:43 CET

AVK SWING CHECK VALVE, METAL SEATED, PN 10/16

41/39-004

Right side free shaft end, DN350-600



Component list:

1. Body	Ductile iron GJS-500-7 (GGG-50)	16. Disc	Ductile iron GJS-500-7 (GGG-50)
2. Washer	Stainless steel A2	17. Protective bush	EPDM rubber
3. Nut	Stainless steel A2	18. Washer	Stainless steel 1.4401 (316)
4. Stud bolt	Stainless steel A2	19. Bolt	Stainless steel A2
5. Face ring	Alu-bronze CC331G (AB1)	20. O-ring	EPDM rubber
6. Seat ring	Alu-bronze CC331G (AB1)	21. Bushing, open	Brass, DZR CW602N (CZ132)
7. Bonnet	Ductile iron GJS-500-7 (GGG-50)	22. O-ring	EPDM rubber
8. Bolt	Stainless steel A2	23. Gasket	Polyamide
9. O-cord	EPDM rubber	24. Air plug	Stainless steel
10. Guide bush	EPDM rubber	25. Shaft	Stainless steel 1.4021 (420)
11. Washer	Stainless steel A2	26. Connector	Stainless steel 1.4408
12. Split pin	Stainless steel A2	27. Spacer	Stainless steel 1.4404 (316L)
13. Castle nut	Stainless steel A2	28. O-ring	EPDM rubber
14. Stud bolt	Stainless steel A2	29. Bushing, closed	Brass, DZR CW602N (CZ132)
15. Hinge arm	Ductile iron GJS-500-7 (GGG-50)		

Components may be substituted with equivalent or higher class materials without prior notification.

Reference nos. and dimensions:

AVK ref. no.	DN	Flange	L	H	H3	W	W1	Theoretical weight / kg
	mm	drilling	mm	mm	mm	mm	mm	
41-350-39-00800	350	PN10	800	419	689	705	415	314 -
41-350-39-01800	350	PN16	800	419	689	705	415	314 -
41-400-39-00800	400	PN10	900	470	765	775	450	371
41-400-39-01800	400	PN16	900	470	765	775	450	371
41-450-39-00800	450	PN10	1000	518	843	845	485	539
41-450-39-01800	450	PN16	1000	518	843	845	485	539
41-500-39-00800	500	PN10	1100	570	935	905	515	748
41-500-39-01800	500	PN16	1100	570	935	905	515	748
41-600-39-00800	600	PN10	1300	630	1060	1019	572	954

The designs, materials and specifications shown are subject to change without notice due to the continuous development of our product programme.

AVK SWING CHECK VALVE, METAL SEATED, PN 10/16

41/39-004

Right side free shaft end, DN350-600

Reference nos. and dimensions:

AVK ref. no.	DN	Flange	L	H	H3	W	W1	Theoretical weight / kg
	mm	drilling	mm	mm	mm	mm	mm	
41-600-39-01800	600	PN16	1300	630	1060	1019	572	954